

A certified welder must complete all welds.

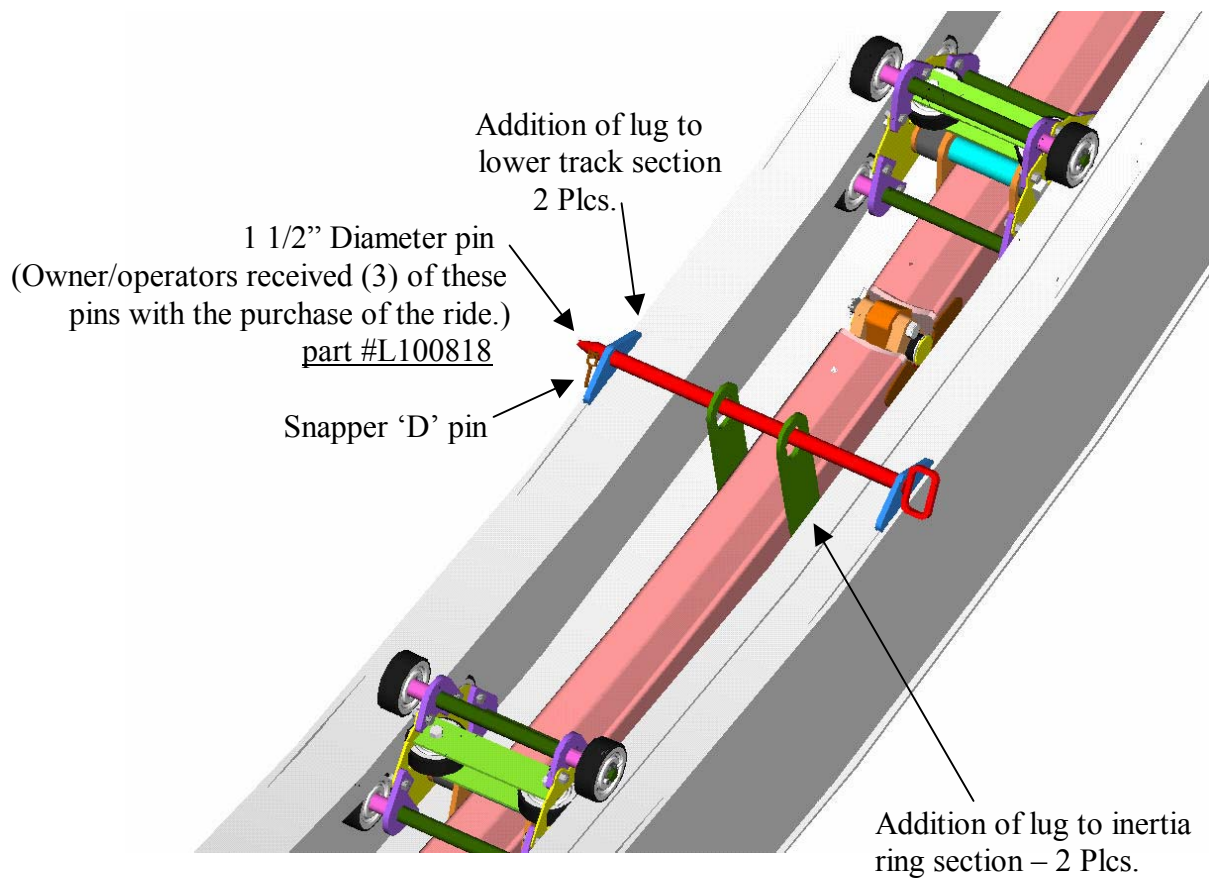
Caution: Inertia section contains 1/2 quart of oil. Welder must be aware of this condition.

Caution: Ensure inverted train is centered at top of track and secured, such as with chains, before attempting this procedure.

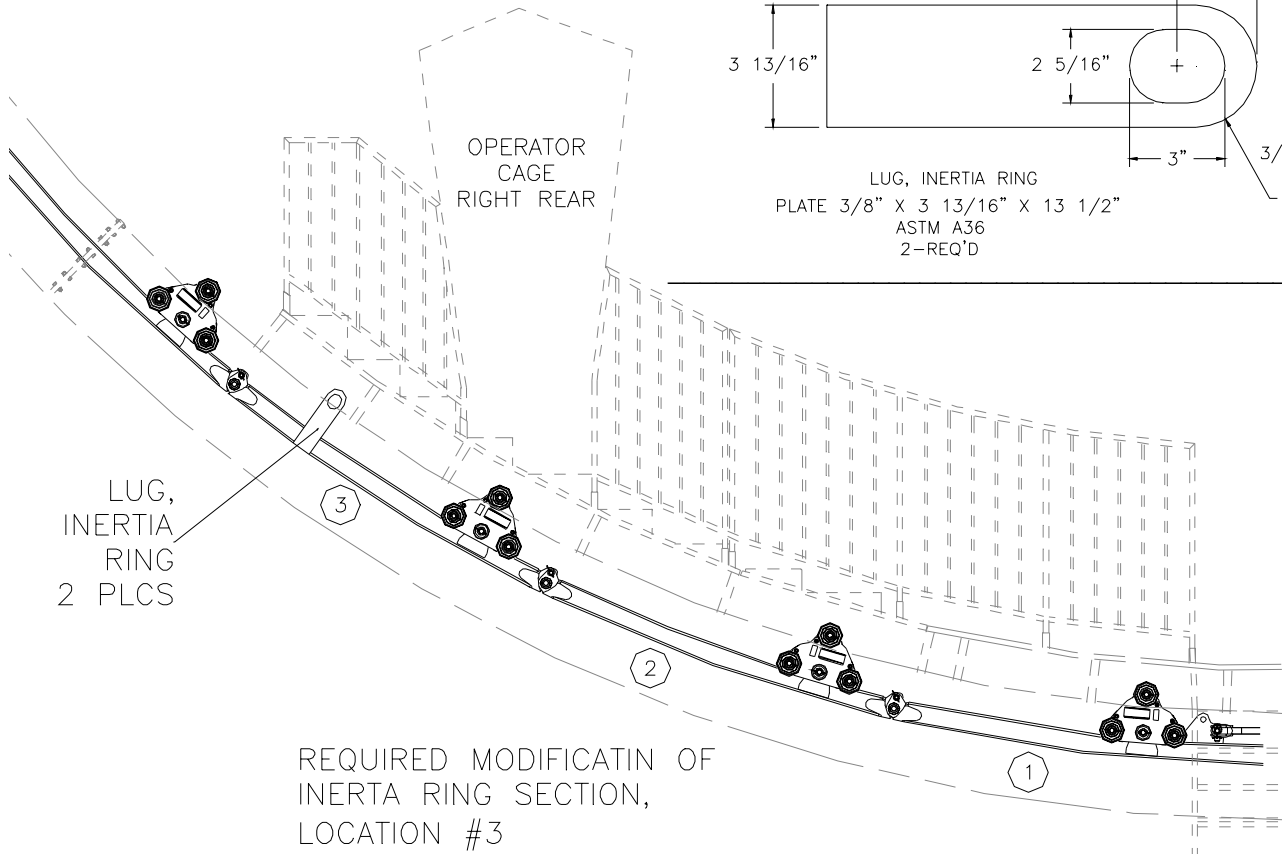
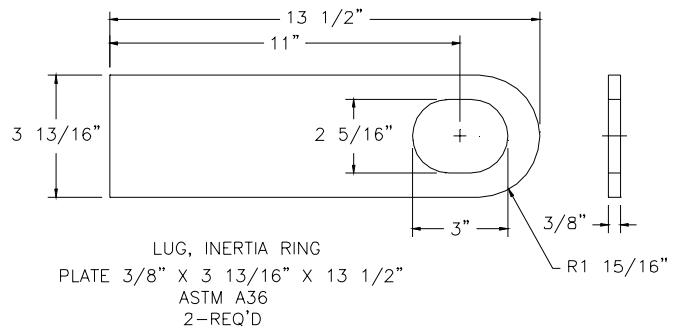
See Detail of Issue below.

Detail Of Issue:
(Text/Drawings/Schematics)

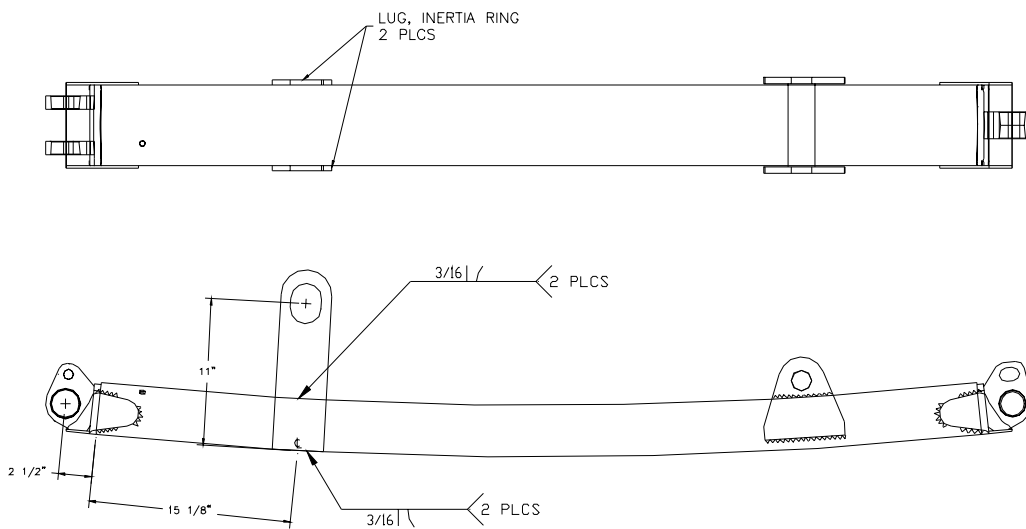
RENDERING



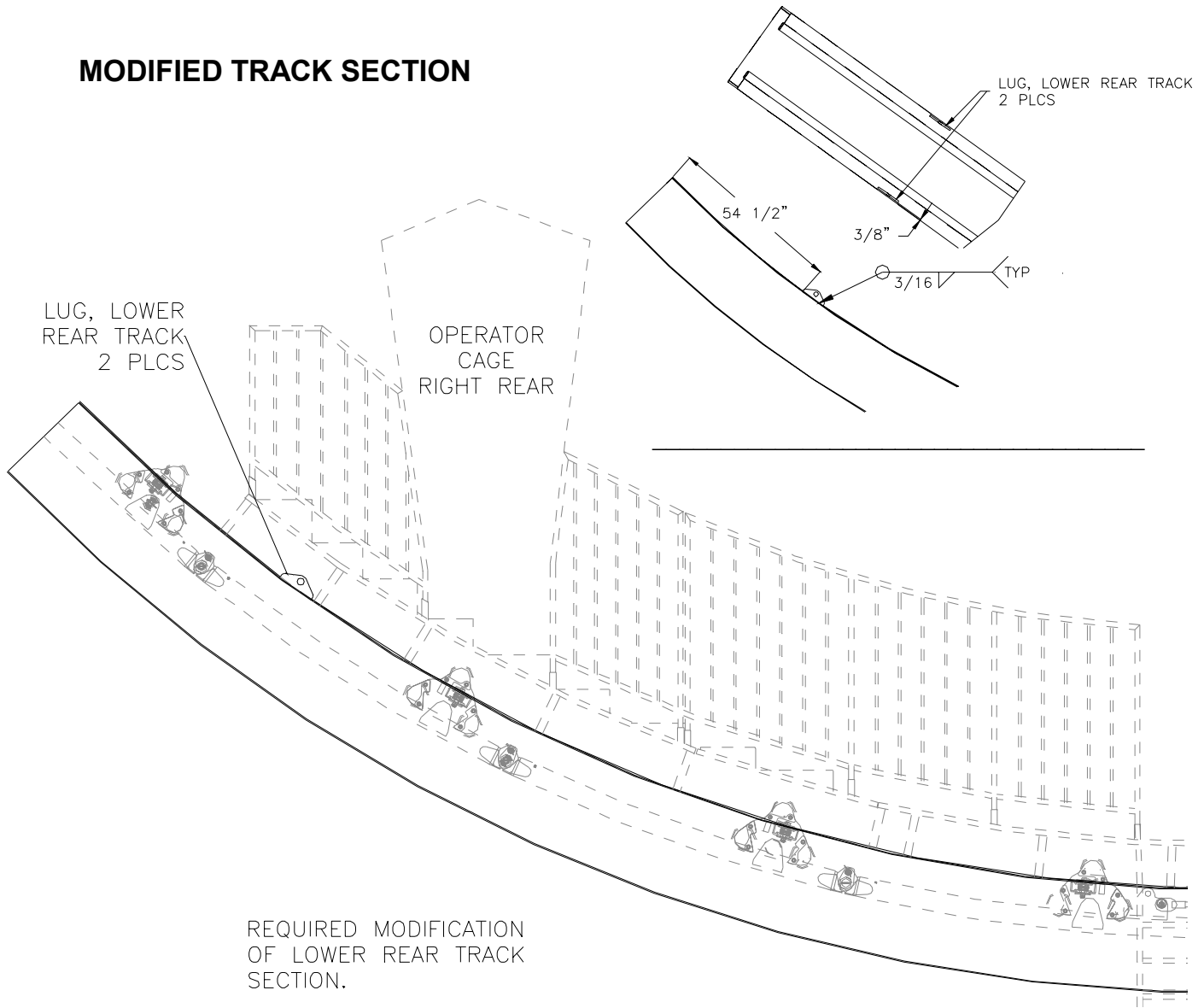
MODIFIED INERTIA SECTION



INVERTED INERTIA RING
 TRAIN INVERTED AT TOP
 OF TRACK



MODIFIED TRACK SECTION



LUG, LOWER REAR TRACK
PLATE 1/2" X 3" X 7 1/2"
ASTM A36
2-REQ'D

